

CUSTOM PANEL SYSTEM – ACCUSNAP®

1. GENERAL

1.1. Scope

Furnish & install Accutrack Upholstered Wall System in accordance with finish schedule and architectural drawings.

1.2. Standards

The components of the systems, both individually and as a finished assembly shall have a Class "A" rating in accordance with ASTM E-84.

1.3. Distributed by:

Accutrack Systems, Inc.
6910 Oakridge Commerce Way SW
Austell, GA 30188
Office # (770) 941-9009 Fax # (770) 841-0250
Website: www.accutracksystems.com
Email: info@accutracksystems.com

1.4. Submittals

A – Submit for approval the following:

- 1.4.1. Installation drawings showing panel layout, location, typical details and special conditions as required by finish schedule and architectural drawings.
- 1.4.2. Manufacturer's Specifications
- 1.4.3. Fire rating certificates for all components.
- 1.4.4. 12" x 12" mock-up of each fabric specified in the finish schedule.

B – Contractor shall provide a five-year limited warranty against defects in materials and workmanship.

1.5. Product Handling

All materials shall be protected before, during and after installation from dirt, dust and the work of other trades.

1.6. Preparation

- A – Space must be enclosed and weather-tight.
- B – All wet work must be completed and dry.
- C – Ambient temperature and humidity must be continuously maintained at levels acceptable for final occupancy of the space.
- D – Adjacent and related work must be completed including millwork, ceiling grid, base, painting, wallcovering, electric work and other miscellaneous finishes..
- E – Unsatisfactory conditions will be documented in writing to the general contractor, architect and representatives of the owner. Installation of the system will not proceed until unsatisfactory conditions have been corrected.

2. PRODUCTS

2.1. Accutrack Upholstered Wall System

A – Accutrack rigid vinyl extrusions, available profiles and thickness. Specify:

1. 1,000 R, 3/8" thick with Radius Edge
2. 1,000 S, 3/8" thick with Square Edge
3. 5,000 R, 1/2" thick with Radius Edge
4. 5,000 B/45, 1/2" thick with 45° Bevel Edge
5. 5,000 C, 1/2" thick with Chamfer Edge
6. 5,000 S, 1/2" thick with Square Edge
7. 7,500 R, 3/4" thick with Radius Edge
8. 7,500 B/45, 3/4" thick with 45° Bevel Edge
9. 7,500 S, 3/4" thick with Square Edge
10. 7,500 B-N, 3/4" thick with Bevel Edge
11. 10,000 R, 1" thick with 1/2" Radius Edge
12. 10,000 S, 1" thick with Square Edge
13. 10,000 C, 1" thick with 1/4" Chamfer Edge
14. 10,000 B-N, 1" thick with Bevel Edge
15. 15,000 R, 1 1/2" thick with 3/8" Radius Edge
16. 15,000 C, 1 1/2" thick with 1/4" Chamfer Edge
17. 15,000 B-N, 1 1/2" thick with Bevel Edge
18. 15,000 S, 1 1/2" thick with Square Edge
19. 20,000 R, 2" thick with 1/2" Radius Edge
20. 20,000 S, 2" thick with Square Edge
21. 20,000 B-N, 2" thick with Bevel Edge

B – Standard acoustical infill 6 lb. density compressible, fire retardant fiberglass. Available in 1/2", 3/4", 1", 1 1/2" and 2" thickness.

1. 1/2" thick fiberglass – NRC .55
2. 3/4" thick fiberglass – NRC .65
3. 1" thick fiberglass – NRC .80
4. 1 1/2" thick fiberglass – NRC .95
5. 2" thick fiberglass – NRC 1.05

C – Optional tackable infill 23 lb. density, mineral core fiberboard.

1. Available in 1/2" and 3/4" thickness
2. Add suffix "T" to indicate tackable infill.
3. May be specified in conjunction with standard acoustical infill in selected areas.

D – Optional impact resistant, 18 lb. density, fire retardant, compressed fiberglass overlay – 1/8" thick.

E – Optional "Soft Touch" panel 25 lb. density, fire retardant, mineral core fiberboard with 1/2" compressible fire retardant polyester fiberfill overlay.

G – All corners to be reinforced with locking nylon corner keys.

2.2. Alternates will not be acceptable.

3. EXECUTION

3.1. Installation

- A – Accutrack will be installed by a licensed installation company trained by the manufacturer.
- B – Field measure and layout each wall to receive upholstered wall system as shown on plans, elevations and finish schedule.
- C – All installations must be Field Site Installed.
- D – Install Accutrack to create individual panels as required. Panels shall be plumb and straight.

CUSTOM PANEL SYSTEM – ACCUSNAP®

- E – Install infill material as required. Infill shall be smooth and free from bumps and protrusions. Infill material shall be flush with face of Accutrack extrusions.
 - F – Cut fabric from roll and mark top of panel in numerical sequence. Install sequentially, matching direction to insure a uniform installation.
 - G – Fabric shall be stretched taut and smoothly over the system and bonded to the framework with adhesive. Fabric shall be plumb and free of flaws and defects.
 - H – Wallplates and other obstructions shall be shimmed to the same plane as the finished system.
- 3.2. Cleanup and Protection
- A – Vacuum all exposed fabric surfaces.
 - B – Trim and remove all loose threads.
 - C – Remove all excess materials, rubbish, and debris from installation and leave in neat, clean and orderly condition.
 - D – Cover all fabric panels with protective sheeting until space is ready for occupancy.

4. FABRICS

- A – Manufacturers standard or customer's own materials.
- B – All fabrics shall be approved by contractor to insure suitability.
- C – All light color and transparent fabrics may require a fabric liner.
- D – The following information shall be submitted by the architect for each fabric specified.
 1. Fabric Manufacturer
 2. Width of fabric
 3. Content
 4. Pattern
 5. Style
 6. Color
 7. Source
- E – All fabrics should be treated with a stain-resistant finish.

5. WARRANTY

Provide Five Year Limited Warranty against defects in materials and workmanship.

ACOUSTICAL SUBSURFACE

Accutrack Panels, Baffles and Upholstered Wall Systems utilize molded fiberglass boards as a subsurface for all acoustical applications.

Acoustical board is a thermal and acoustical insulation product made from inorganic glass fibers pre-formed into boards bonded by a thermosetting resin. The board is manufactured with a smooth surface on one side and is precision cut with a 1/16" tolerance in thickness, insuring perfect alignment within the Accutrack framework.

ACOUSTICAL FIBERGLASS PHYSICAL PROPERTIES

Meets Class A Surface Burning Characteristics per ASTM E 84

Flame Spread 25

Smoke Development 50

ACOUSTICAL COEFFICIENTS – TYPE A MOUNTING¹

Density	Thickness	125 Hz	250 Hz	500 Hz	1000 Hz	2000 Hz	4000 Hz	NRC
6PCF	1/2"	.05	.16	.41	.76	.92	.94	.55
6PCF	3/8"	.05	.25	.58	.87	.98	.96	.65
6PCF	1"	.19	.32	.71	.98	1.10	.98	.80
6PCF	1 1/2"	.14	.60	.97	1.09	1.09	.98	.95
3PCF	2"	.18	.59	1.03	1.14	1.06	.99	.95
6PCF	2"	.22	.79	1.05	1.17	1.12	1.00	1.05
Composite ²	1"	.15	.50	1.00	1.00	.97	.90	.86

¹Tested in accordance with ASTM C 423

²Composite Board is 1/8" 18 PCF fiberglass laminated to 7/8" 3 PCF fiberglass for use as an impact resistant or tackable subsurface

Moisture Absorption: ASTM C 533 – less than 3% by weight

Mold Growth: ASTM C 665 – will not provide sustenance

Corrosiveness: ASTM C 665 – will not cause corrosion of aluminum, steel or copper.

OTHER DENSITIES

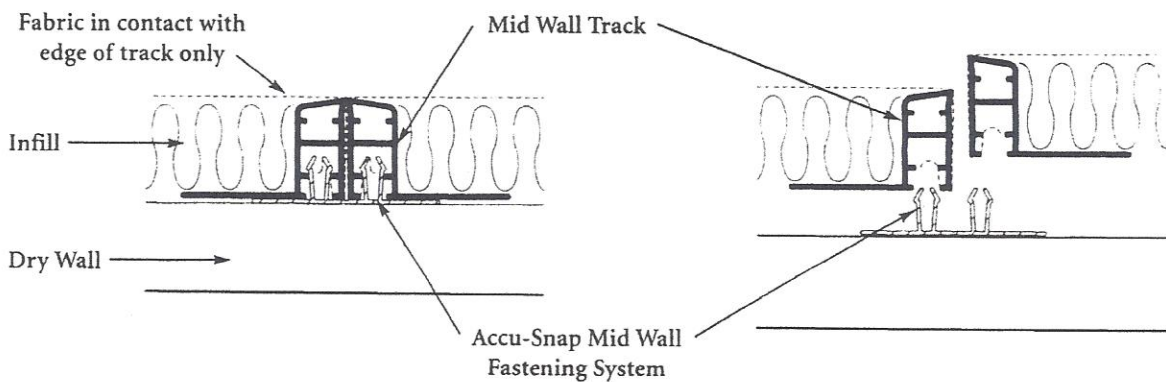
Estimated NRC Values

Thicknesses in inches

Density	0.125	0.250	0.375	0.500	0.625	0.750	0.875	1.000
4 pcf	0.120	0.335	0.391	0.455	0.526	0.598	0.669	0.735
6 pcf	0.068	0.220	0.332	0.456	0.577	0.687	0.781	0.869
8 pcf	0.140	0.192	0.359	0.529	0.677	0.794	0.883	0.948
10 pcf	0.026	0.204	0.422	0.616	0.766	0.871	0.942	0.986
12 pcf	0.020	0.239	0.492	0.692	0.830	0.916	0.965	0.988
14 pcf	0.020	0.284	0.559	0.752	0.870	0.935	0.963	0.968
16 pcf	0.023	0.332	0.616	0.794	0.891	0.935	0.945	0.935

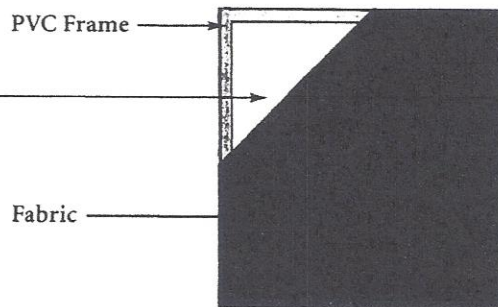
ACCUTRACK MIDWALL SYSTEM with Patented ACCU-SNAP Fastening

This innovative fabric wrapped wall panel product has been in development for the last two years. With this system, Accutrack now offers the defining solution to not only perfect panel joints, but to a fastening system that simplifies the installation and removal of our panels. The Accutrack MidWall System is so much more reliable than any of the friction fit systems on the market that we offer a FIVE YEAR warranty against any panel defect, including sagging of the fabric. Clean, crisp edges and joints. Quick and easy panel removal for repairs or fabric change. Specify this one of a kind wall panel system for a problem-free panel job of the highest quality. We guarantee it.



Infill Options:

- a) 6 PCF Fiberglass
- b) Tackable Micore
- c) High impact 18 PCF fiberglass Face



Standard Edge Profiles



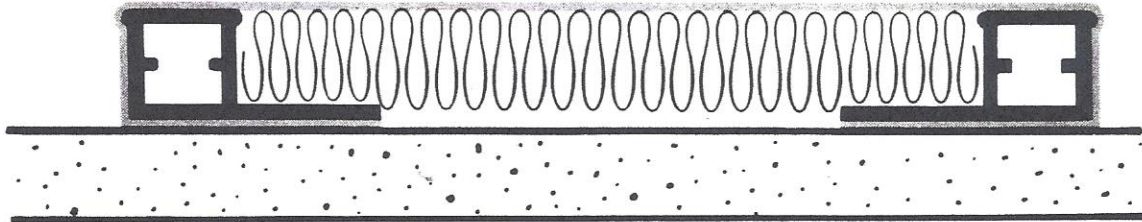
SQUARE



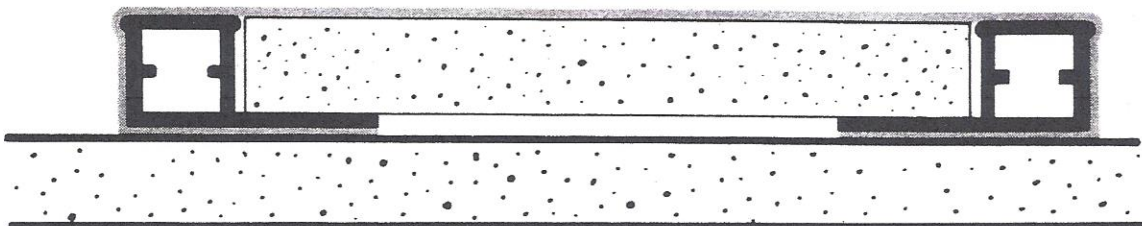
RADIUS



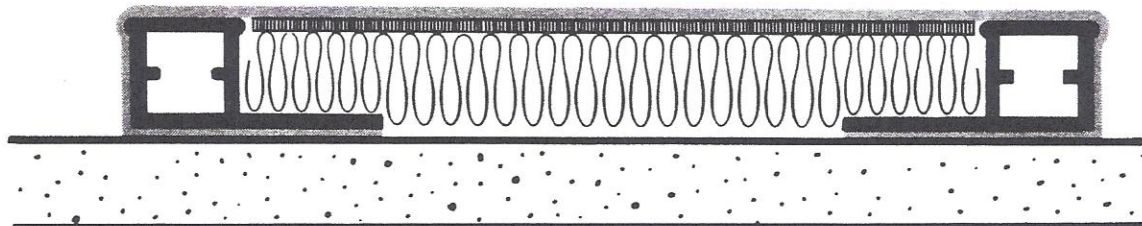
45°BEVEL



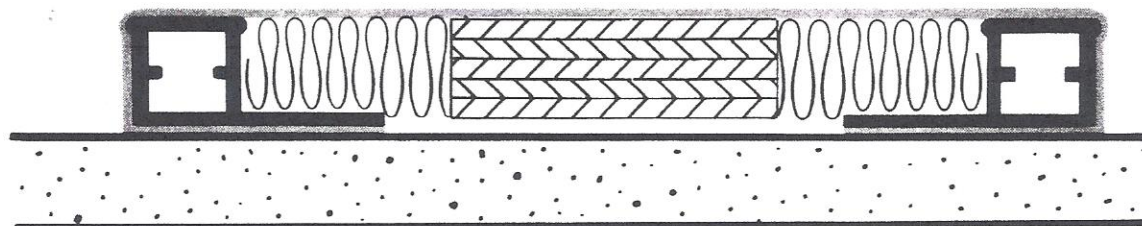
ACOUSTICAL 6 LB DENSITY FIBERGLASS



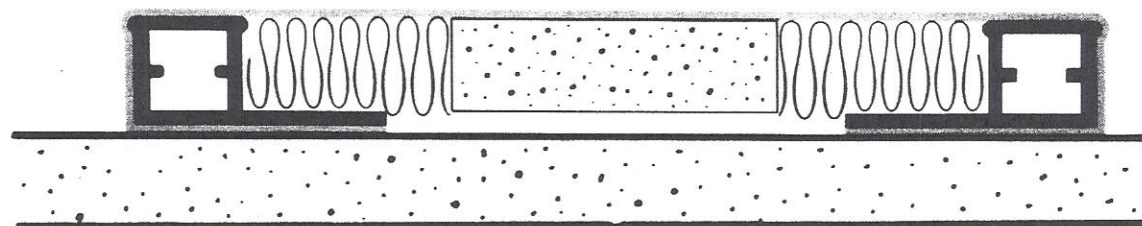
TACKABLE 25 LB DENSITY MINERAL FIBERBOARD (MICORE)



IMPACT RESISTANT COMPOSITE FIBERGLASS
($\frac{1}{8}$ " 18PCF FIBERGLASS BONDED TO 6PCF FIBERGLASS)



PLYWOOD INSERT FOR ARTWORK/SIGNAGE



MICORE INSERT FOR COMBINATION ACOUSTICAL/TACKABLE PANEL